

SEDUCERS BEACH (Tyee Cove)

Access: Shore Dive

Skill Level: All Divers

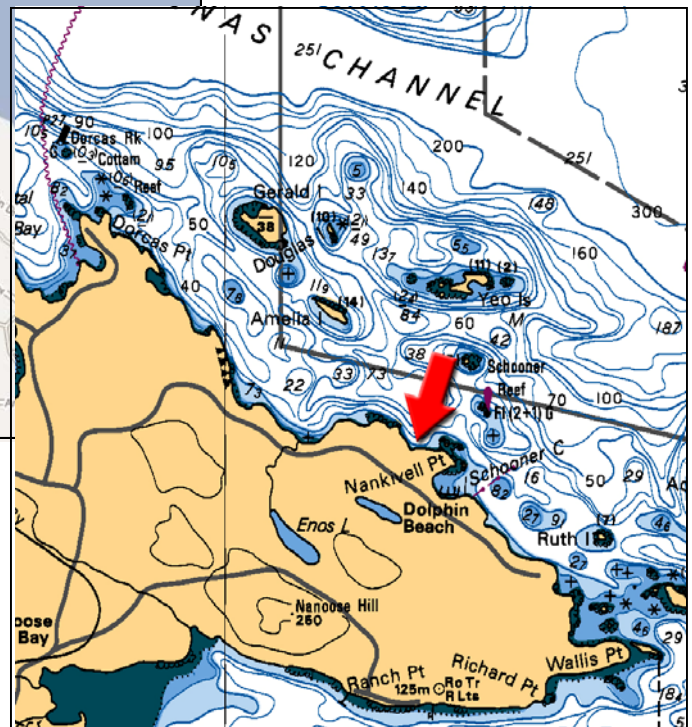
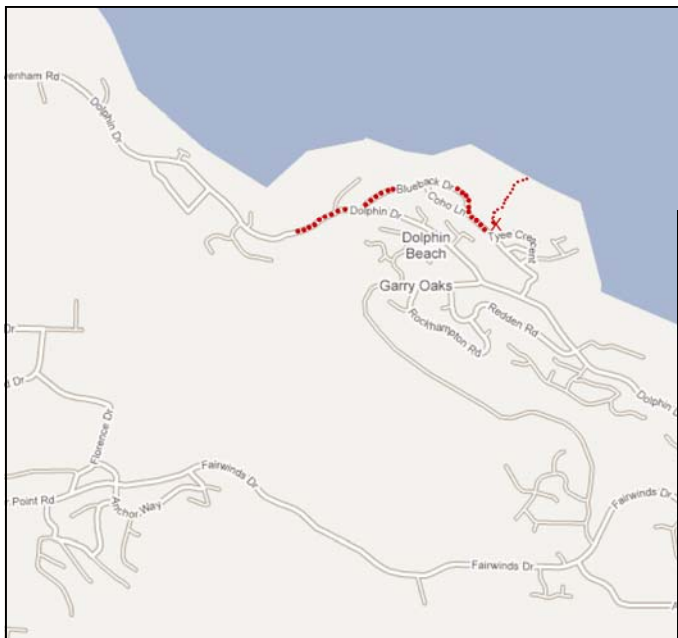
Highlights: Easy access, sandy and rocky bottom, all set in a park like setting. This is an extremely popular training site due to its easy access and variety of marine life. Sandy bottom with eelgrass quickly gives way to a rocky bottom in this protected bay. The top of the wall to the right begins at 50 feet and steps to 130+. Staying shallow is easy but the bottom quickly drops off to deeper depths where sponges are abundant.

Marine Life: There is a large variety of fish life and Invertebrates at this site. This includes lots of Perch in the kelp forest, large Nudibranches, Orange Sponges, and Boot Sponges at depth. You may also see schools of young Tube Snouts, Kelp Greenlings, and Ling Cod.

Hazards: This is protected bay, however wind from the south can make conditions here rough. Always dive with a float and flag to warn boaters.

Access: From Northwest Bay Road turn onto Stewart Road following the route to Schooner Cove Marina. The road will eventually turn into Dolphin Drive. Continue to follow the water and turn left onto Blueback Drive. When you reach the corner of

Blueback and Tyee Cres. You will see a parking area on the left. Walk the short trail to the waters edge.



This map provided courtesy of:

101-2270 Cliffe Avenue
Courtenay, BC., V9N 2L4
(250)338-6829
www.scubashark.com