

# **BOLD POINT**

**Access:** Shore Dive

**Skill Level:** All Divers

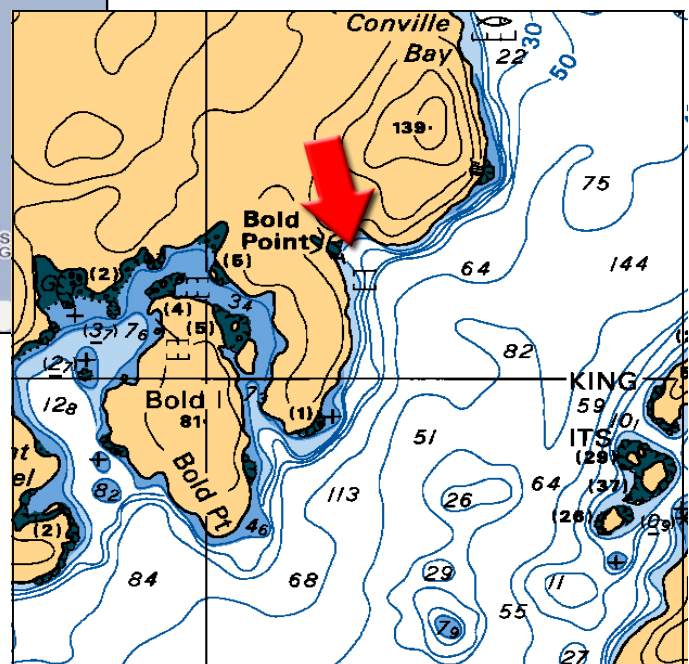
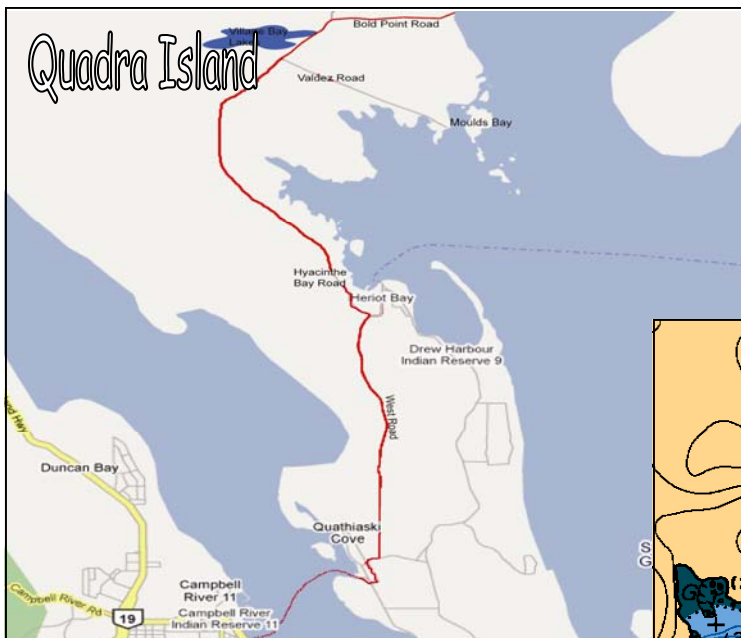
**Highlights:** Bold Point is site to an old Union Steamship Terminal and at one time a Hospital. There is little left to show this history except an old bridge and some building foundations in the forest. The entrance is a short walk from the parking area. At depth you will find a wall running both to the left and right. In the centre a muddy bottom drops away to 100 plus feet and you stand a good chance of finding old plates and other Steamship Artifacts.

**Marine Life:** Painted Anemones, Rock Scallops, Kelp Greenling, Orange Sea Perch, and maybe even Octopi and a Wolf Eel or two.

**Hazards:** Winter winds from the Southeast create large swells in this bay.

**Access:** Bold Point is on the East side of Quadra Island. From Campbell River take the 10 minute ferry ride to Quadra. Drive up the hill to the shopping center turn left and follow the signs to Heriot Bay. Follow down West Road until you are nearly

in Heriot Bay where you will turn left and follow Hyacinthe Bay Road. About 20 minutes you will find yourself on a Gravel Road which will wind up at Village Bay Lakes. Right after the lake turn right on Bold Point Road and follow to the end.



*This map provided courtesy of:*



101-2270 Cliffe Avenue  
Courtenay, BC., V9N 2L4  
(250)338-6829  
[www.scubashark.com](http://www.scubashark.com)